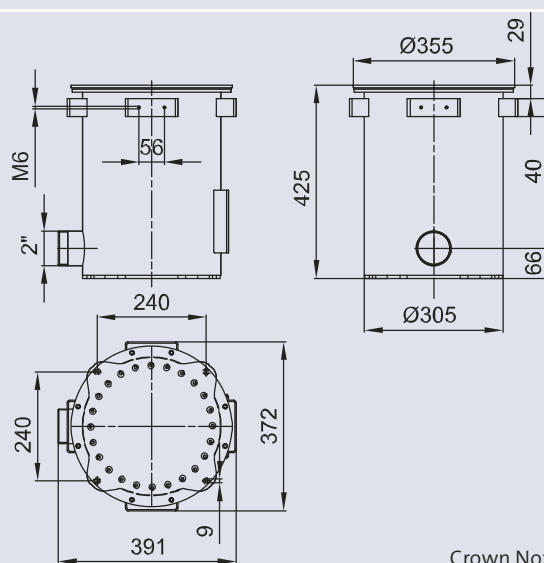




Crown Nozzle



Crown Nozzle

	Fresh Water	Pool Water	Sea Water	220-240 V	400 V	110-120 V	50 Hz	60 Hz	12 V AC	24 V DC	DMX	DMX/RDM	Plug and Spray
Crown Nozzle													

*Seawater product version on request

CROWN NOZZLE

The Crown Nozzle is a multi-jet nozzle. The 24 fixed, drilled in inclined direction nozzle outlets generate a majestic water pattern and thereby achieve a fountain height of up to 5 mtrs.

The Crown Nozzle gives out 24 clear and precise single jets each with a diameter of 6 mm. This stainless steel nozzle is suitable for fresh water and pool water application. The Crown Nozzle, in combination with the Varionaut pumps, creates spectacular and dynamic water patterns. More stunning and dynamic water images can be created by combining the crown nozzle and the Varionaut pump with additional VarioJet nozzles 42-15/55-20 (58906).

Product characteristics at a glance

- 24 x 6 mm precise full jets
- Water-level independent
- Stainless steel
- Sea water CrownNozzle on request

Crown Nozzle				
Dimensions (ØxH mm)		355 x 425		
Fountain height		DSD	DWB	DDB
		[m]	[l/min]	[bar]
1.00	[m]	0.85	116	0.11
2.00	[m]	1.55	162	0.23
3.00	[m]	2.40	202	0.35
4.00	[m]	3.20	237	0.49
5.00	[m]	3.90	270	0.64
Material		Stainless steel 1.4301 (AISI 304)		
Weight [kg]		approx. 16		
Order no.		58907		