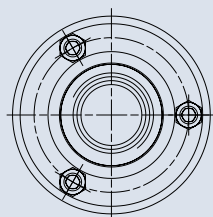
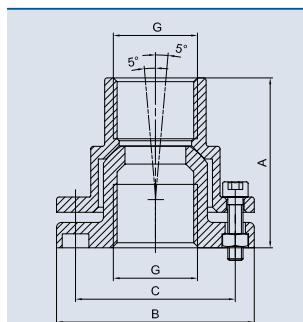


SWIVEL CONNECTION



Product characteristics at a glance

- Adjustment for nozzles
- Silver optic
- Durable chrome and nickel plated brass



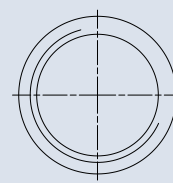
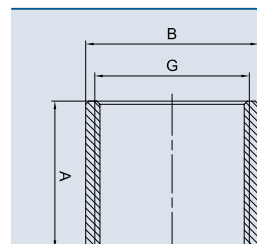
Swivel Connection silver		10	15	20
G	[inch]	1	1 ½	2
A	[mm]	70	75	88
B	[mm]	78	101	127
C	[mm]	63	80	104
Weight	[kg]	0.55	1.12	2.05
Order no.		51015	51016	51017

SLEEVE SILVER



Product characteristics at a glance

- Straight threading
- High-quality stainless steel



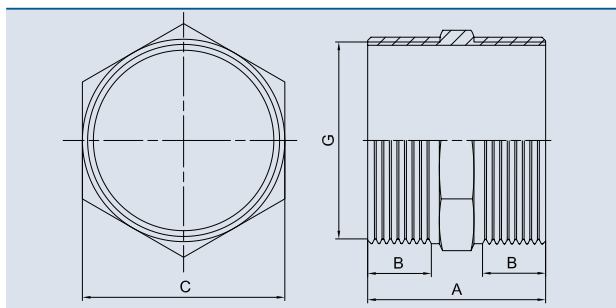
Sleeve Silver		10	15	20	30
A	[mm]	42.3	47.2	51.7	66.7
B	[mm]	38.0	53.5	66.0	95.0
G	[inch]	1	1 ½	2	3
Material		Stainless steel			
Weight	[kg]	0.09	0.16	0.25	0.63
Order no.		51018	51019	51020	51021

HEXAGON NIPPLE SILVER



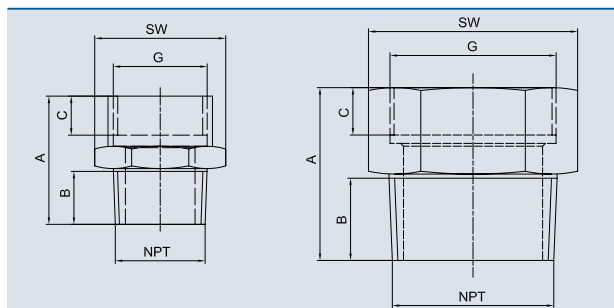
Product characteristics at a glance

- Straight threading
- High-quality stainless steel



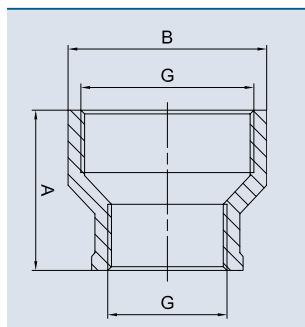
Hexagon Nipple Silver		10	15	20	30
G	[inch]	1	1 ½	2	3
A	[mm]	49	51.5	54.5	68
B	[mm]	20.4	20.7	22	27.5
C	[mm]	35	50	62	91
Material		Stainless steel			
Weight	[kg]	0.065	0.20	0.40	0.51
Order no.		51022	51023	51024	51025

ADAPTER G/NPT



Adapter		G10/NPT10	G15/NPT15	G20/NPT20	G30/NPT30
A	[mm]	46	43	62	78
B	[mm]	21	21	29	37
C	[mm]	16	14	17	20
SW	[mm]	36	50	65	95
G	[inch]	1	1 ½	2	3
Weight	[kg]	0.145	0.238	0.493	0.68
Order no.		51026	51027	51028	51029

REDUCING SLEEVE

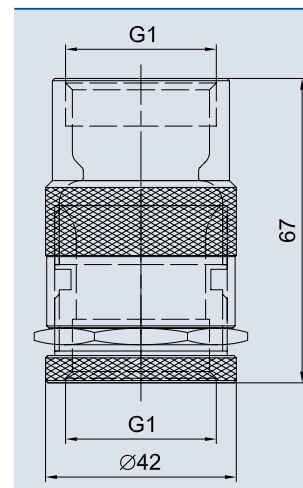


Product characteristics at a glance

- High-quality stainless steel
- Straight threading

Reducing Sleeve		15 x 10	20 x 15
A	[mm]	50	59
B	[mm]	57	70
G	[inch]	1 ½ - 1	2 - 1 ½
Weight	[kg]	0.175	0.225
Order no.		51032	51030

FLOW VALVE 10

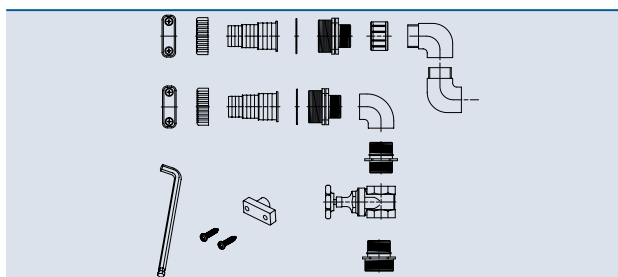


Product characteristics at a glance

- Flow regulator
- Use below nozzle
- High-quality stainless steel
- Straight threading

Flow Valve 10		
Dimensions (Ø)	[mm]	42 x 67
Material		Stainless steel
Weight	[kg]	0.3
Order no.		51033

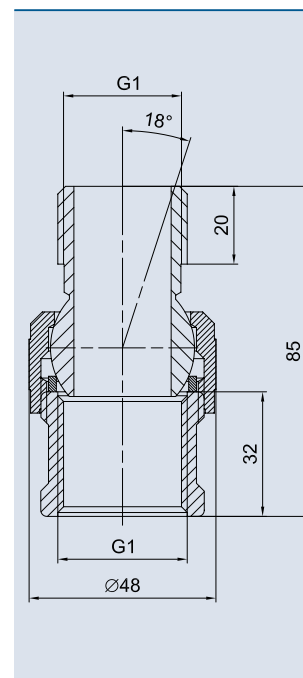
JUMPINGJET RAINBOW STAR INSTALLATION KIT



Scope of delivery

JumpingJet Rainbow Star Installation Kit		
	2	Flat gasket hose tail 1 ½"
	2	Coupling nut 1 ½" 40–20
	2	Stepped hose tail 1 ½" black
	1	Bush plastic 1"
	1	Bracket 90° G1 I-I plastic
	1	Hexagonal Nipple R1"
	2	Red. Nippel 1 ½" AG to 1" AG
	1	MS. shut off gate valve 1" 290
	2	Screws V2A DIN 7981, 4,8 x 25
	1	Gland seal Rainbow Star
	1	Hexagon screwdriver 5mm
	1	Flat gasket 53 x 48 x 1.5 mm NBR/SBR 70Sh
	2	Elbow 90° G1 I-A plastic
	2	Hose clamp 20 - 32 mm
	2	Hose clamp 35 – 50 mm 1.4301
	1	Coupling nut 1 ½" 40 - 20
	1	1 Bush plastic 1"
Weight	[kg]	0.84
Order no.		51058

SWIVEL BALL JOINT 10



Product characteristics at a glance

- Adjustment for nozzles
- Straight threading
- Durable chrome and nickel plated brass

Swivel ball joint 10		
Dimensions (Ø)	[mm]	48 x 85
Material		Nickel plated brass
Weight	[kg]	0.37
Order no.		51165