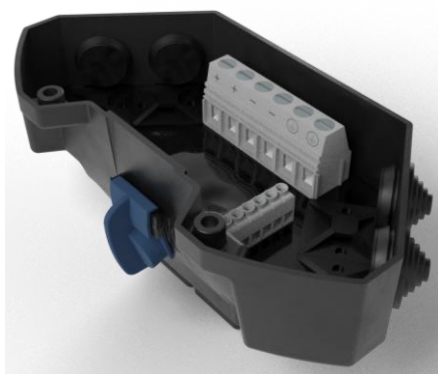


OASE GmbH
 Tecklenburger Straße 161
 D - 48477 Hörstel
 Phone: +49(0)54 54 – 800
 Fax: +49(0)54 54 – 80 322
 info@oase.com
 www.oase-professional.com

ProNect Transition Box 77880



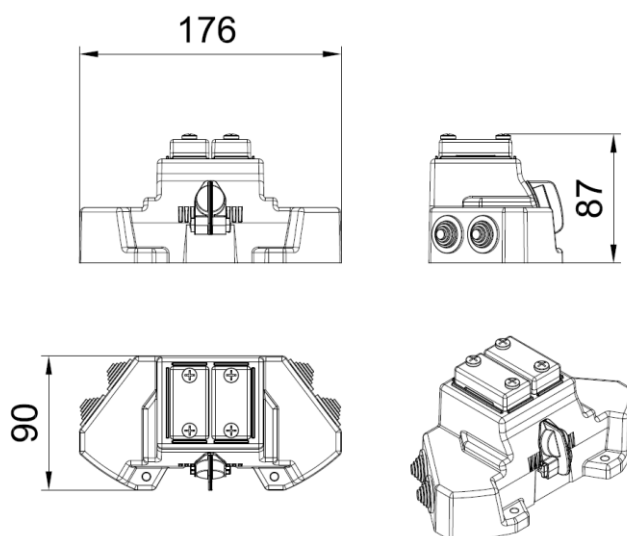
| Fresh water | Pool water | Sea water | 220-240 V | 400 V | 110-120 V | 50 Hz | 60 Hz | 12 V AC | 24 V DC | DMX | DMX/RDM | Plug & Spray |
|-------------|------------|-----------|-----------|-------|-----------|-------|-------|---------|---------|-----|---------|--------------|
| | | | | | | | | | | | | |



Product characteristics at a glance:

- Transition from individual 24V voltage and DMX lines to the ProNect connection system
- Loop-through possible from:
 - the DMX bus by connecting two DMX lines
 - the supply voltage by connecting two 24V-DC cables incl. earthing cable
- Magnetic switch included for setting the end resistance at the last bus node of the DMX line
- Variable nipples allow the use of different cable cross-sections (6 mm–16 mm)
- Supplied multiple grommet allows the use of single wires (4 mm–7 mm)
- Supplied with a casting material for safe protection of the wiring
- Overhead installation position of the box allows wiring in an ergonomic position
- UL-certified

Product drawing:



The information contained in this data sheet is the sole property of OASE GmbH. Any reproduction in part or as a whole without the written permission of OASE GmbH is prohibited.

21.07.2020_FM

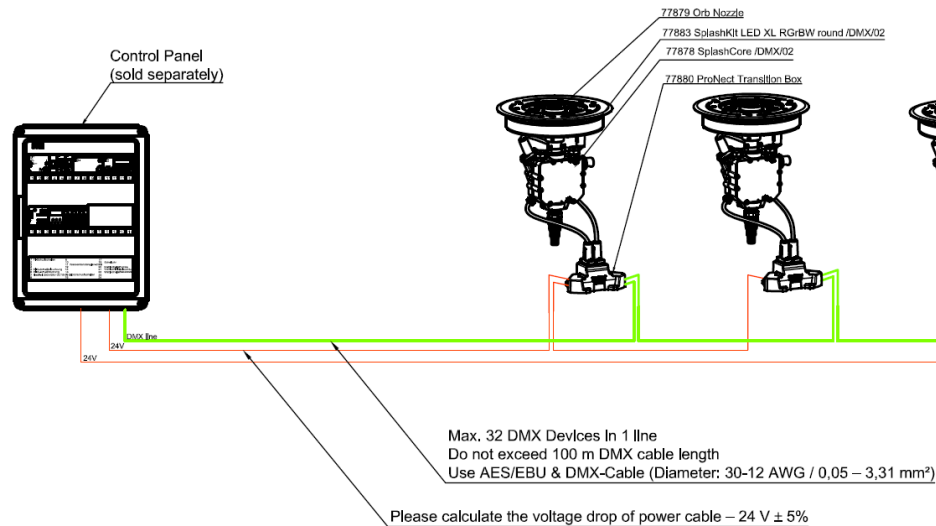
Version 1.0

sheet 1/3

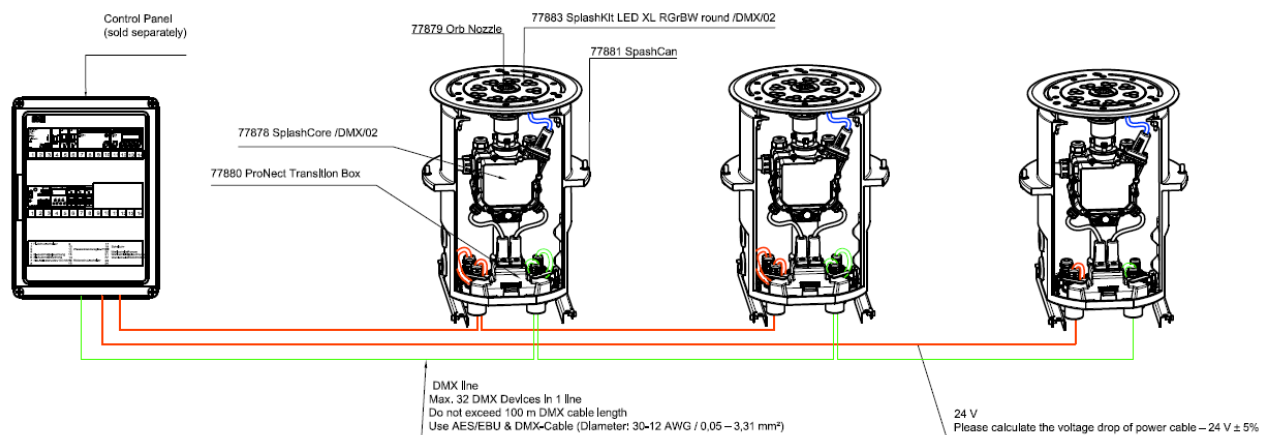
ProNect Transition Box 77880



System drawing – hanging SplashKit with individual cable connection:



System drawing – embedded SplashKit with individual cable connection:

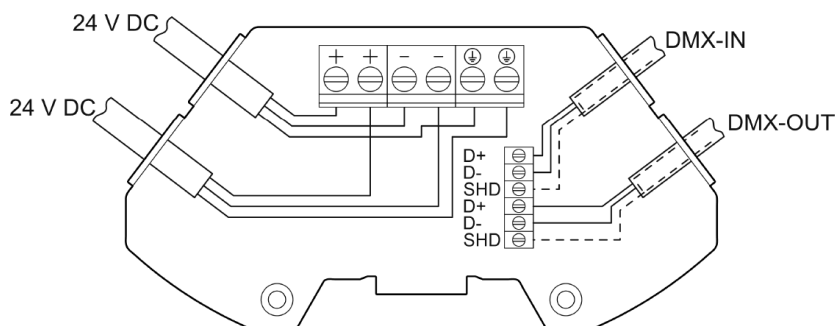


OASE GmbH
 Tecklenburger Straße 161
 D - 48477 Hörstel
 Phone: +49(0)54 54 – 800
 Fax: +49(0)54 54 – 80 322
 info@oase.com
 www.oase-professional.com

ProNect Transition Box 77880



Wiring diagram:



| ProNect Transition Box | | |
|---------------------------------|--------|--|
| Dimension (LxWxH) | [mm] | 176 x 90 x 87 |
| Nominal voltage | [V/DC] | 24 |
| Signal output | | DMX |
| Min. cable diameter | [mm] | 6 |
| Max. cable diameter | [mm] | 17 |
| Min. cable diameter single wire | [mm] | 4 |
| Max. cable diameter single wire | [mm] | 7 |
| Number of cable clamp power | Pcs. | 6 (2x 24VDC, 2x GND, 2x Earth) |
| Cable cross section power clamp | | 22-8 AWG / 0.34 – 6 mm ² |
| Torque power clamp | [Nm] | 2.15 |
| Wire stripe length power clamp | [mm] | 10 |
| Max. current power clamp | [A] | 30 |
| Number of cable clamp DMX | Pcs. | 6 (2x Da+, 2x Da, 2x SHD) |
| Cable cross section DMX clamp | | 30-12 AWG / 0.25 – 2.5 mm ² |
| Torque DMX clamp | [Nm] | 0.5 |
| Wire stripe length DMX clamp | [mm] | 6 |
| DMX end resistance | | Magnetic switch (set only at the last product in the DMX line) |
| Potting material | | PUR (In scope of delivery) |
| Material | | Plastic (PET), rubber |
| Weight | [kg] | 1.1 |
| Order No. | | 77880 |

The information contained in this data sheet is the sole property of OASE GmbH. Any reproduction in part or as a whole without the written permission of OASE GmbH is prohibited.