

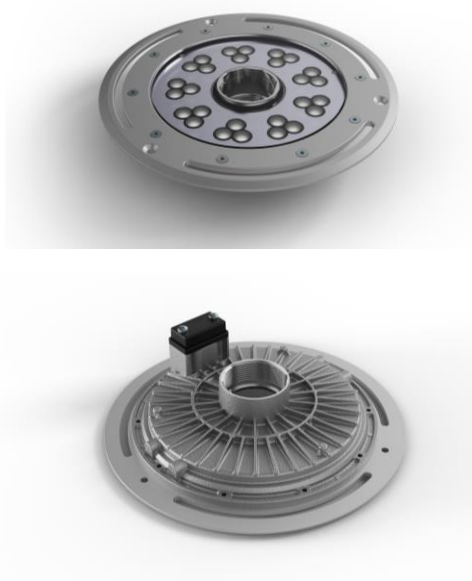
**OASE GmbH**  
 Tecklenburger Straße 161  
 D - 48477 Hörstel  
 Phone: +49(0)54 54 – 800  
 Fax: +49(0)54 54 – 80 322  
 info@oase.com  
 www.oase-professional.com

## SplashKit LED XL RGrBW recessed /DMX/02 84882



Fresh water	Pool water	Sea water	220-240 V	400 V	110-120 V	50 Hz	60 Hz	12 V AC	24 V DC	DMX	DMX/RDM	Plug & Spray

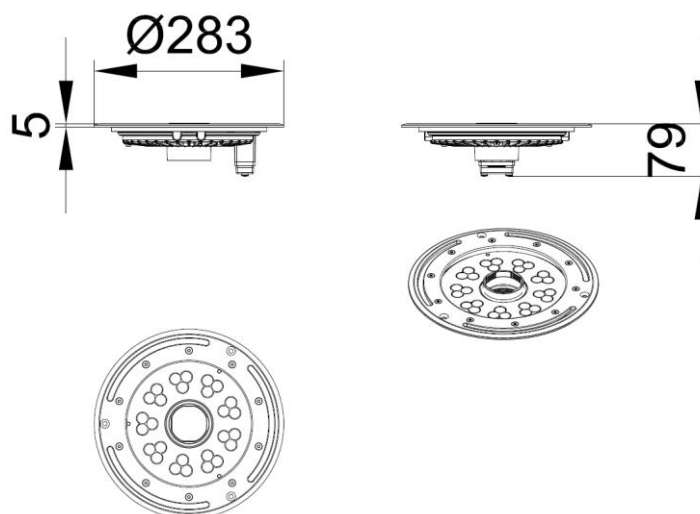
### Product characteristics at a glance:



- Round LED spotlight for installation mounted flush to the ground in the integrated version
- Adapted for use in the embedded SplashKit
- RGBW spotlights with almost unlimited colour spectrum
- Powerful and intense illumination of the different water patterns
- Homogeneous illumination of the fountain with uniformly calibrated LEDs
- Drain holes for returning water
- Central opening for connecting the Orb Nozzle
- Control via DMX/RDM (programming support and status information on temperature and operating hours)
- Easy installation via the OASE ProNect system
- Load up to 5 kN in combination with SplashCan
- Lifetime up to 100,000 hrs\*
- UL certified
- Matching winter cover available

\*In case of underwater application, an intelligent heat management and quality brand LED enables a lifetime of up to 100.000 hrs. This claim does not entitle to a guarantee.

### Product Drawing:



The information contained in this data sheet is the sole property of OASE GmbH. Any reproduction in part or as a whole without the written permission of OASE GmbH is prohibited.

21.07.2020\_FM

Version 1.0

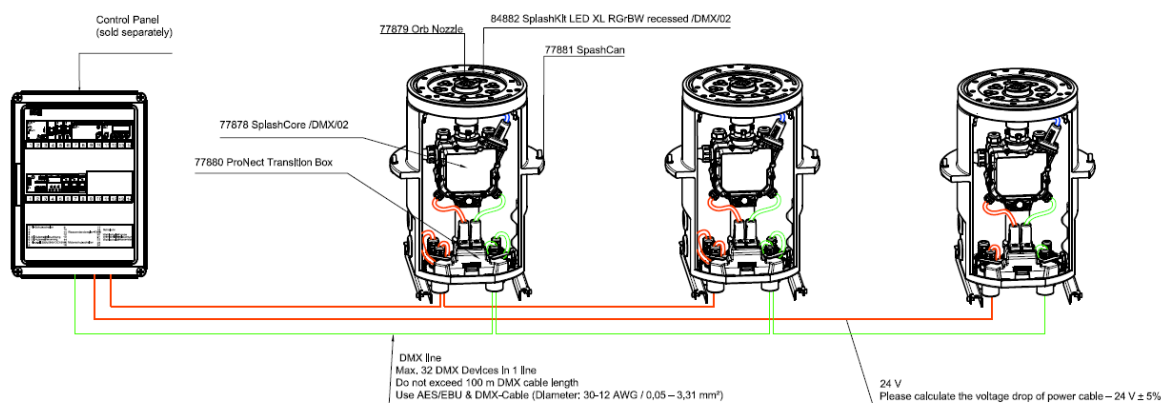
sheet 1/4

**OASE GmbH**  
 Tecklenburger Straße 161  
 D - 48477 Hörstel  
 Phone: +49(0)54 54 – 800  
 Fax: +49(0)54 54 – 80 322  
 info@oase.com  
 www.oase-professional.com

## SplashKit LED XL RGrBW recessed /DMX/02 84882



### Example of use – embedded SplashKit

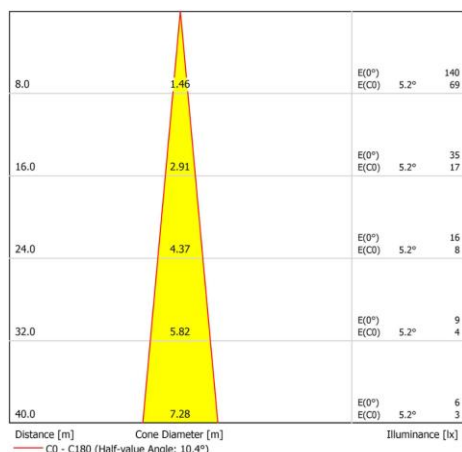


**OASE GmbH**  
 Tecklenburger Straße 161  
 D - 48477 Hörstel  
 Phone: +49(0)54 54 – 800  
 Fax: +49(0)54 54 – 80 322  
 info@oase.com  
 www.oase-professional.com

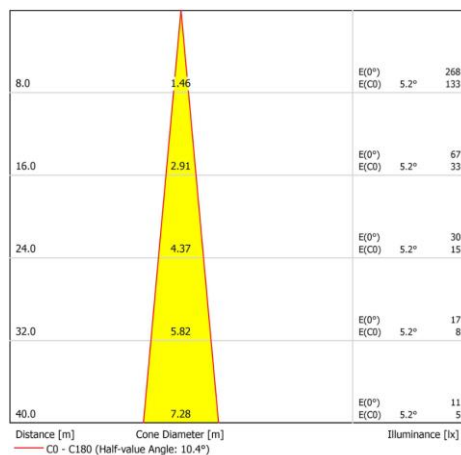
**SplashKit LED XL RGrBW**  
 recessed /DMX/02  
**84882**



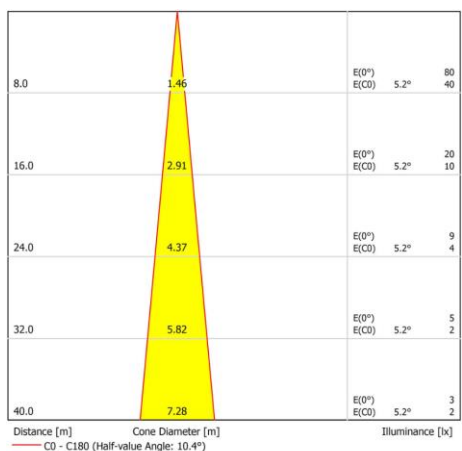
**Red:**



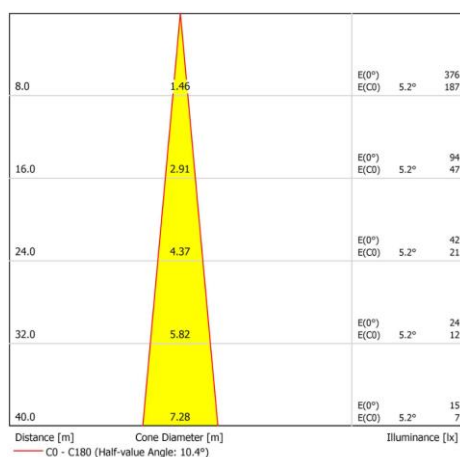
**Green:**



**Blue:**



**White:**

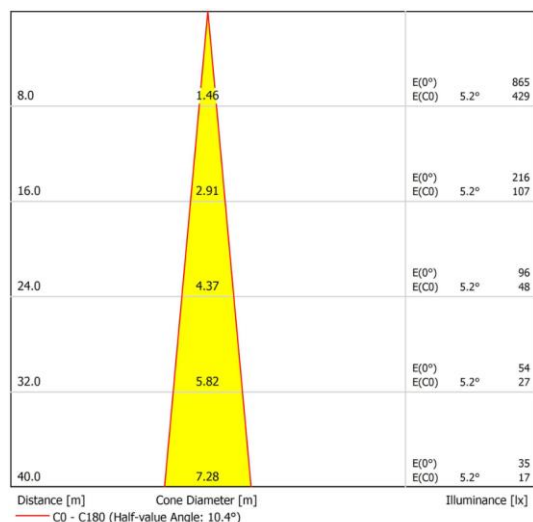


**OASE GmbH**  
 Tecklenburger Straße 161  
 D - 48477 Hörstel  
 Phone: +49(0)54 54 – 800  
 Fax: +49(0)54 54 – 80 322  
 info@oase.com  
 www.oase-professional.com

**SplashKit LED XL RGrBW**  
 recessed /DMX/02  
**84882**



All on:



**SplashKit LED RGrBW recessed /DMX/02**

Luminous flux all on	Lm	2511
Luminous flux red	Lm	720
Luminous flux green	Lm	1380
Luminous flux royal blue	Lm	411
Luminous flux white	Lm	391
Colour temperature white	K	4000 (±200)
Beam angle	°	11
Strobe effect	Hz	0-25
Energy efficiency class		B
Weighted energy consumption	kWh/1000h	77
Rated voltage	V/DC	24
Power consumption	W	70
Rated current	A	3.1
Dim frequency	Hz	2800
Power connection		Hybrid plug
Protection class		IP 68/4m
Pressure side connection	Inch	2
Dimensions	(Ø x H)	283 x 63
Max. load	kN	20
Material		Stainless steel 1.4571 (AISI 316 Ti)
Weight	kg	6.1
<b>Order No.</b>		<b>84882</b>

The information contained in this data sheet is the sole property of OASE GmbH. Any reproduction in part or as a whole without the written permission of OASE GmbH is prohibited.