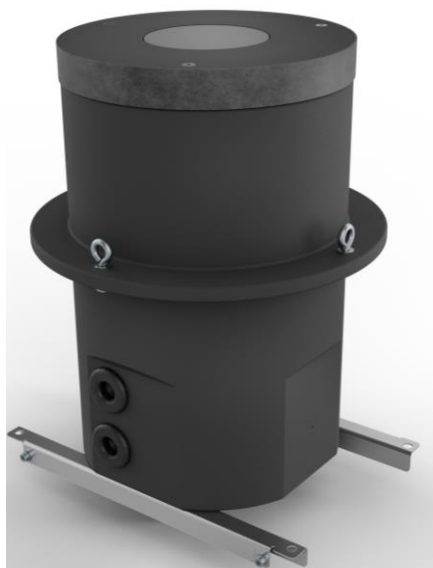


OASE GmbH
 Tecklenburger Straße 161
 D - 48477 Hörstel
 Phone: +49(0)54 54 – 800
 Fax: +49(0)54 54 – 80 322
 info@oase.com
 www.oase-professional.com

SplashCan 77881



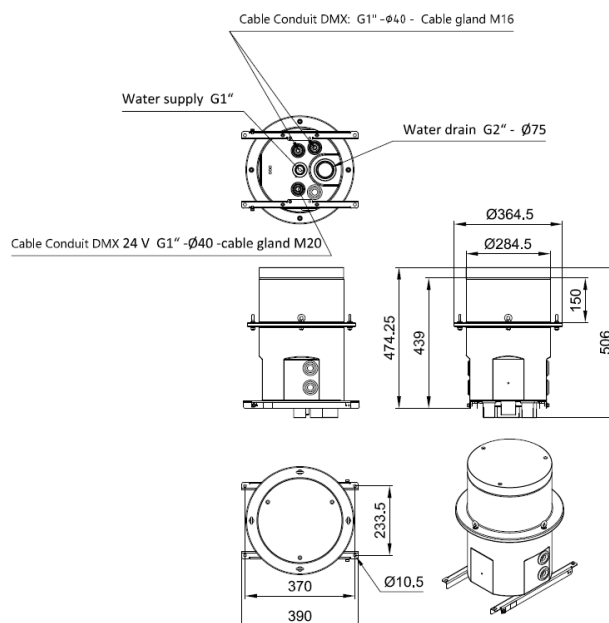
Fresh water	Pool water	Sea water



Product characteristics at a glance:

- Fountain Can for installation of the effect unit in the integrated installation variant
- Robust plastic can withstand all stresses and strains, while also simplifying handling on the construction site
- Flexible installation options for connecting cables (from the side/from below)
- Pre-assembled adapters for the water supply, water discharge and cable glands
- Includes manual flow control for the individual adjustment of the fountain height
- The installation cover serves as a level for the height of the fountain surface and protects the connected pipes from contamination during installation
- Earth conductor included in scope of delivery
- Screw lugs in the surrounding ring allow the containers to be strung together

Product drawing:



The information contained in this data sheet is the sole property of OASE GmbH. Any reproduction in part or as a whole without the written permission of OASE GmbH is prohibited.

21.04.2021 FM

Version 1.1

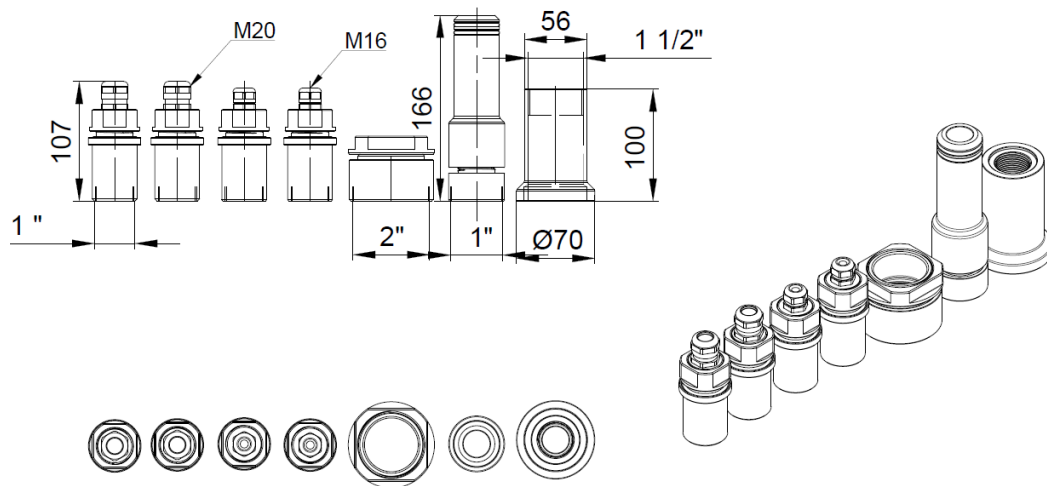
sheet 1/4

OASE GmbH
 Tecklenburger Straße 161
 D - 48477 Hörstel
 Phone: +49(0)54 54 – 800
 Fax: +49(0)54 54 – 80 322
 info@oase.com
 www.oase-professional.com

SplashCan 77881



Connection possibilities:



Connections SplashCan

Bulkhead cable gland power

Quantity	Pcs.	1
Connection		1" (G1) female
Connection		Outer diameter: 40 mm (DN 40)
Cable diameter	[mm]	5 – 14
Cable gland		M20
Material		POM / PA / rubber

Bulkhead cable gland DMX

Quantity	Pcs.	2
Connection		1" (G1) female
Connection		Outer diameter: 40 mm (DN40)
Cabel diameter	[mm]	4 – 11
Cable gland		M16
Material		POM / PA / rubber

Adapter Water Supply

Quantity	Pcs.	1
Connection		1" (G1) female

Adapter Water Drain

Quantity	Pcs	1
Connection		2" (G2) female
Connection		Outer diameter: 75 mm (DN 75)

The information contained in this data sheet is the sole property of OASE GmbH. Any reproduction in part or as a whole without the written permission of OASE GmbH is prohibited.

OASE GmbH
 Tecklenburger Straße 161
 D - 48477 Hörstel
 Phone: +49(0)54 54 – 800
 Fax: +49(0)54 54 – 80 322
 info@oase.com
 www.oase-professional.com

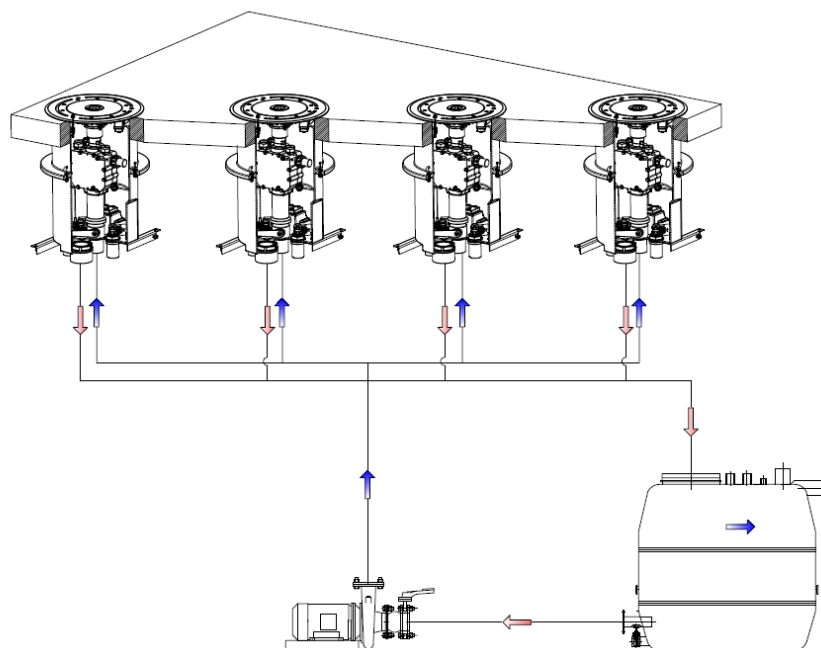
SplashCan 77881



System image – SplashCan embedded SplashKit:



System drawing – embedded SplashKit water supply



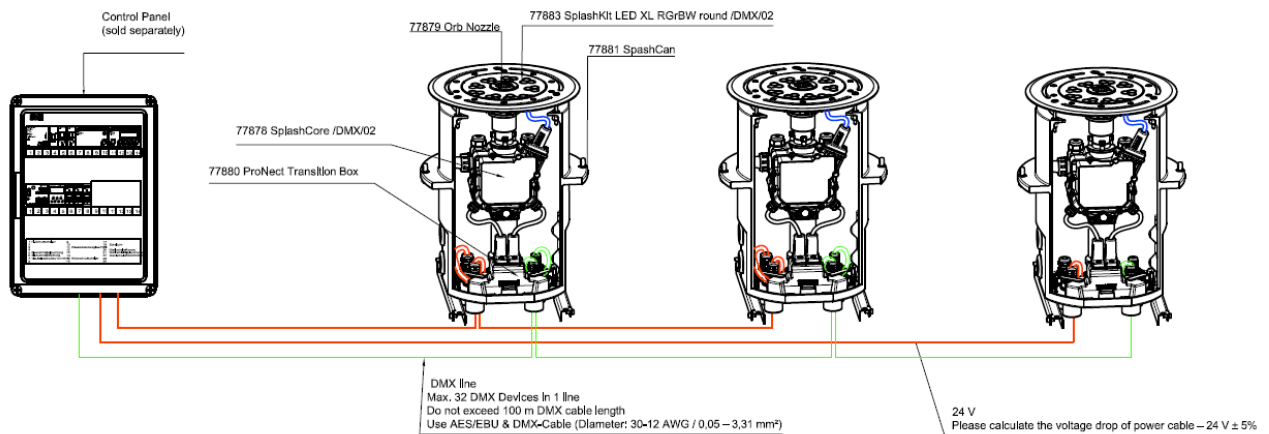
The information contained in this data sheet is the sole property of OASE GmbH. Any reproduction in part or as a whole without the written permission of OASE GmbH is prohibited.

OASE GmbH
 Tecklenburger Straße 161
 D - 48477 Hörstel
 Phone: +49(0)54 54 – 800
 Fax: +49(0)54 54 – 80 322
 info@oase.com
 www.oase-professional.com

SplashCan 77881



System drawing – embedded SplashKit with individual cable connection:



SplashCan

Max. direct load	[kN]	5
Setup		4 x threaded bar (not included in the scope of delivery)
Equipotential bonding		Yes
Material		Polyethylen ISO 1872-2, UV-stabilized, Stainless steel 1,4301, Rubber
Dimension (Ø x H)	[mm]	285 x 739
Weight	[kg]	5
		77881